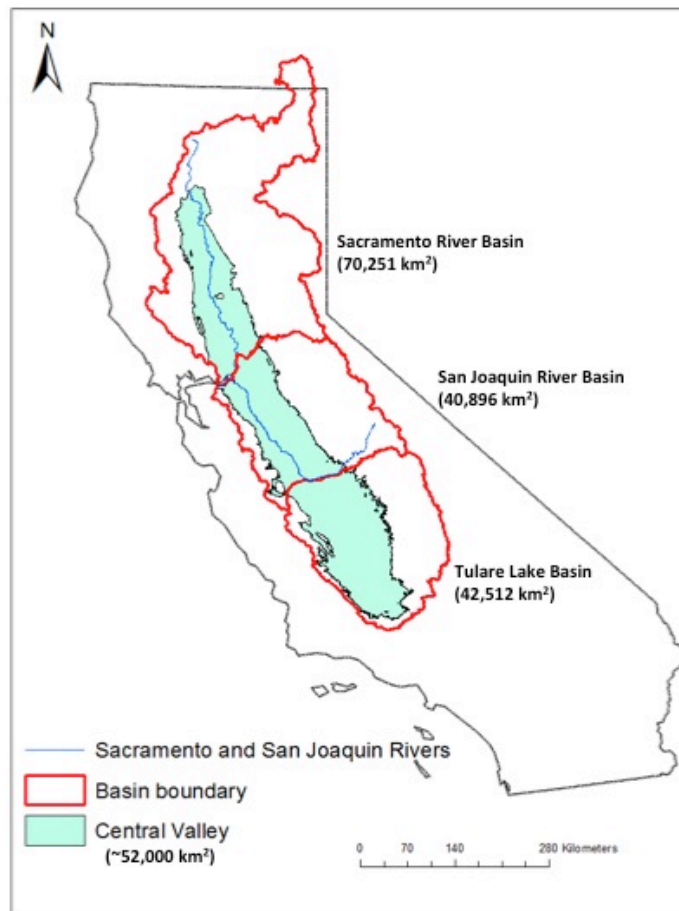


Water Storage Changes in California's Sacramento and San Joaquin River Basins From GRACE: Preliminary Updated Results for 2003-2013

UC Center for Hydrologic Modeling, University of California, Irvine
UCCHM Water Advisory #1
February 3, 2014



Irvine, Calif., February 3, 2014 – In response to the declaration of a drought emergency in California by Governor Jerry Brown (January 17, 2014), we provide a preliminary update to our previous work on water storage changes in the combined Sacramento and San Joaquin River basins, including the Central Valley, by the University of California Center for Hydrologic Modeling (UCCHM) [[Famiglietti et al., 2011](#)] (appended). That study used 78 months (October 2003 – March 2010) of satellite observations from the NASA Gravity Recovery and Climate Experiment (GRACE) mission to show that the Sacramento and San Joaquin River basins lost nearly 31 cubic kilometers of fresh water during the time period investigated, equivalent to nearly the full volume of Lake Mead. Of this, over 20 cubic kilometers of the losses were attributed to Central Valley groundwater depletion. During the drought years of 2006-2010, surface water allocations to Central Valley farmers were significantly reduced, forcing additional reliance on groundwater to meet irrigation water demands. These groundwater losses were clearly evident in our space-based estimates of groundwater storage changes (see Figure 4 of [Famiglietti et al., 2011](#), appended) and pointed to the [potential contributions of satellite missions like GRACE](#) to groundwater monitoring and management, in particular when combined with a robust network of ground-based well measurements and with hydrological simulation models.

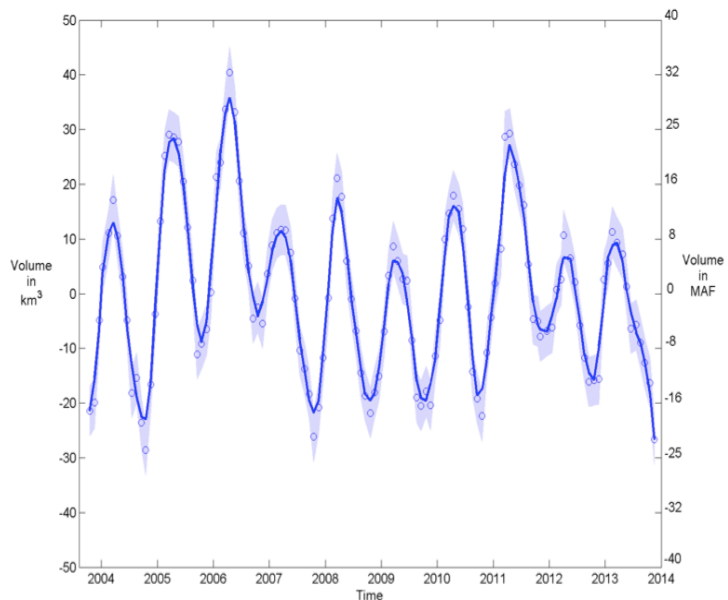


Figure 1. Monthly anomalies (cubic km and million acre-ft) of total water storage from the NASA GRACE mission for the combined Sacramento and San Joaquin River basins. Updated from [Famiglietti et al. \[2011\]](#). October 2003 – November 2013 Total water storage for November 2013 represents a near-decade low.

For this update, we used 122 months (October 2003–November 2013) of GRACE data from the University of Texas at Austin Center for Space Research, Release-05. Note that GRACE data are not yet available beyond November 2013, so that the record-dry early winter of 2013-2014 is not included in this report. Preliminary results from our updated analysis are discussed below, followed by a brief description of the technical methods employed. More detailed discussion of the methods is found in the appended paper. Future updates will follow with the periodic release of additional GRACE data, most likely by early summer 2014.

Figure 1 illustrates anomalies (deviations from the mean) in total water storage (the combination of snow, surface water, soil moisture and groundwater, effectively an integrated measure of basin-wide water availability) for the 122-month period. The previous 2006-2010 drought is apparent, followed by an increase of total water storage in 2011. **Our updated results suggest that since 2011, total water storage observed by GRACE in the Sacramento and San Joaquin River basins has declined sharply, reaching its lowest point in nearly a decade in November 2013 (Figure 1). Moreover, water losses in the 24 months between November 2011 and November 2013 were the greatest of any 2-year time period since the GRACE mission began collecting measurements in March 2002. We estimate that the combined Sacramento and San Joaquin river basins have lost 20 cubic kilometers of fresh water since the onset of the current drought, taken here as 2011.**

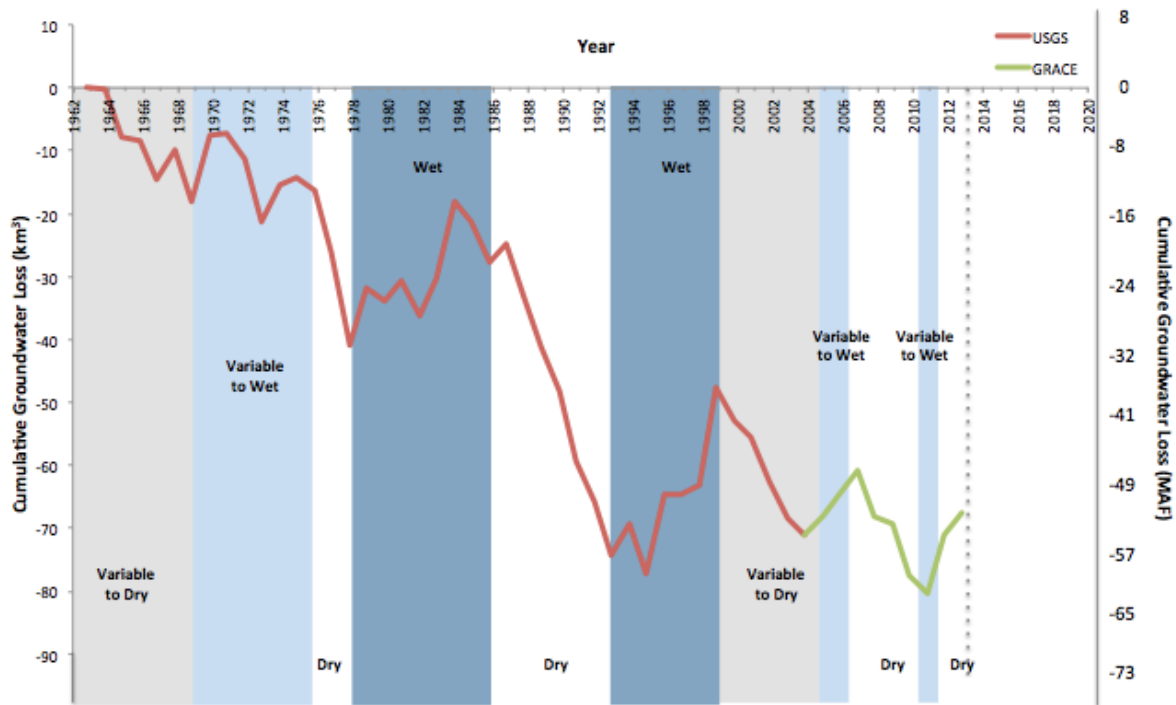


Figure 2: Cumulative groundwater losses (cubic km and million acre-ft) in California’s Central Valley since 1962. The red line shows data from USGS calibrated groundwater model simulations [Faunt, 2009] from 1962-2003. The green line shows GRACE-based estimates of groundwater storage losses from Famiglietti et al. [2011] and updated for this report. Background colors represent periods of drought (white), of variable to dry conditions (grey), of variable to wet conditions (light blue) and wet conditions (blue). Groundwater depletion mostly occurs during drought; and progressive droughts are lowering groundwater storage to unsustainable levels. After Faunt [2009] Figure B9. USGS data courtesy of Claudia Faunt.

The history of Central Valley water use (Figure 2) shows that the volume of groundwater pumped during drought far exceeds the volume of replenishment during wet periods, resulting in

long-term falling groundwater levels and groundwater depletion. This behavior is well-known in the Central Valley, and is clearly displayed in Figure 2, which illustrates cumulative groundwater losses beginning in 1962. Figure 2 was produced by combining USGS simulations of Central Valley groundwater from 1962-2003 [Faunt, 2009] with our updated GRACE-derived estimates of annual groundwater storage changes from 2003-2013. The largest declines in groundwater storage occurred during the droughts of 1962-68, 1975-1977, 1985-1992, 1999-2003, and 2006-2010. Our preliminary analysis shows that, in keeping with the patterns of groundwater use described above, groundwater levels have recovered to near 2006 levels, but not fully, yielding another net loss to Central Valley groundwater storage, as California enters what could be its most severe drought in recorded history.

The severity of the current drought has already resulted in the reduction of California State Water Project allocations to zero (January 31, 2014), affecting the water supplies of over 25 million people and 750,000 acres of farmland. (Central Valley Project surface water allocations will be announced later this month.) Consequently, near-future Central Valley agricultural irrigation requirements will likely be primarily satisfied by groundwater withdrawals. **As such, the Central Valley is poised for yet another period of steeply declining groundwater levels, the severity of which will be dictated by climate, surface water availability, and agricultural and water management decisions. If current drought conditions continue for the next several years, Central Valley groundwater levels will fall to historically low levels, with important implications for all Californians. Historically, drought conditions and groundwater depletion in the Central Valley have resulted in land subsidence, exhaustion of some localized groundwater supplies, greater groundwater pumping costs, reductions in groundwater quality, reductions in planted acreage, higher food costs, ecological damage, depletion of river flows, and several other drought and groundwater-depletion related impacts.**

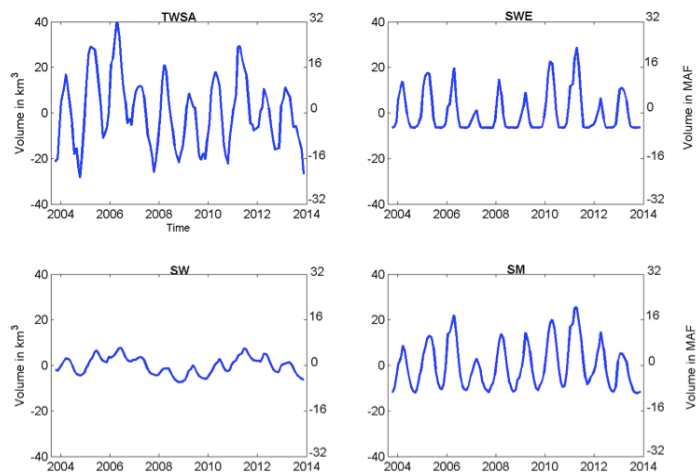


Figure 3. Anomalies of water storage (cubic km and million acre-ft) for the Sacramento-San Joaquin River basins. Upper left, total water storage from GRACE as in Figure 1. Upper right, SWE. Lower left, surface water. Lower right, soil moisture. Updated from *Famiglietti et al.* [2011].

Methods

To further understand the sources of the water losses shown in Figure 1, we compiled independent datasets for snow, surface water and soil moisture storage. Following *Famiglietti et al.* [2011] we also solved for the corresponding Central Valley groundwater storage changes as the residual of the water storage balance. Snow water equivalent (SWE) observations were obtained from the National Operational Hydrologic Remote Sensing Center, surface water storage changes were computed from observations of reservoir heights from the California Department of Water Resources, and soil moisture was simulated using the NASA Global Land Data Assimilation System. GRACE total water storage anomalies (repeated from Figure 1) along with anomalies of SWE, surface water and soil moisture storage are shown in Figure 3. Our updated estimate of groundwater storage anomalies is shown in Figure 4.

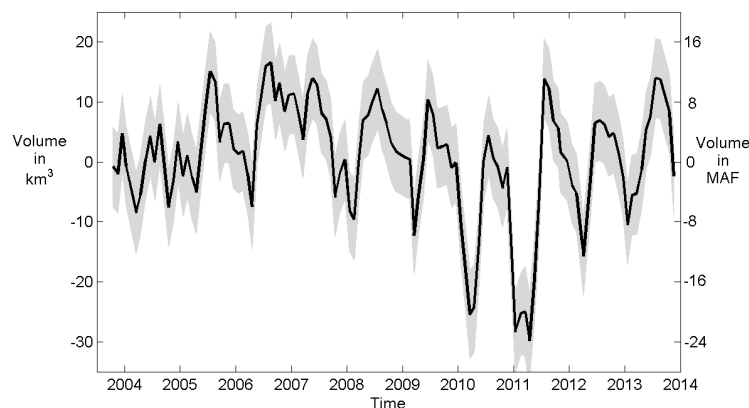


Figure 4. Monthly groundwater storage anomalies (cubic km and million acre-ft) for California's Central Valley, derived from the NASA GRACE satellite mission, other ground-based data and model simulations. A depletion trend is evident from 2006 through early 2011, followed by a recovery phase through the end of available GRACE data (November, 2013). Updated from *Famiglietti et al.* [2011].

shows a recovery to near 2005-2006 levels in response to the wetter conditions of 2011. Note that our preliminary analysis ends in November 2013 (the most recent month for which GRACE data are available), and does not capture what may be a seasonal low point in groundwater storage in response to the record-dry winter months of 2013-2014 (Figure 4).

Figure 3 shows that since the end of our last study (March 2010), SWE, surface water, soil moisture and total water storage in 2010-2011 in the combined Sacramento and San Joaquin River basins all increased. From 2011 through November 2013, large declines in SWE, surface water and soil moisture storage are evident, and account for the decreasing amount of total water storage (Figure 1, and Figure 3, upper left), i.e. the drought conditions since 2011.

Although SWE, surface water and soil moisture storage have all been in decline since 2011, our estimate of groundwater storage anomalies (Figure 4) from 2011 through 2013

References:

- Famiglietti, J. S., M. Lo, S. L. Ho, J. Bethune, K. J. Anderson, T. H. Syed, S. C. Swenson, C. R. de Linage, and M. Rodell (2011), [Satellites measure recent rates of groundwater depletion in California's Central Valley](#), Geophys. Res. Lett., 38, L03403, doi:10.1029/2010GL046442.
- Faunt, C. C. (Ed.) (2009), [Groundwater availability of the Central Valley Aquifer, California](#), U.S. Geol. Surv. Prof. Pap., 1766, 225 pp.

[Download this report](#)

[Download the original 2011 paper](#)

Contacts:

Callie Brazil
Communications & Outreach Coordinator
UC Center for Hydrologic Modeling
brazilc@uci.edu
[@TheUCCHM](#)
(949) 824-3068

Prof. Jay Famiglietti
Director
UC Center for Hydrologic Modeling
jfamigli@uci.edu
[@JayFamiglietti](#)
(949) 824-9434

Contributors:

Jay Famiglietti, Professor, Earth System Science, Civil and Environmental Engineering, and UCCHM Director, UC Irvine
Stephanie Castle, UCCHM Research Specialist
J. T. Reager, UCCHM Postdoctoral Scholar
Brian F. Thomas, UCCHM Postdoctoral Scholar
Sean Swenson, National Center for Atmospheric Research, Research Scientist
Matt Rodell, NASA Goddard Space Flight Center, Chief, Hydrological Sciences Laboratory

About the UC Center for Hydrologic Modeling:

The UCCHM is a University of California system-wide research center formed to address California, national and international water issues. Its mission is to develop state-of-the-art models, remote sensing analyses, data products and data management to support research and sustainable water management on both local and global levels. UCCHM findings inform state, regional, national and international leaders, and advise decision-makers at all levels, on the future of water availability. For more information, please visit www.ucchm.org. Follow [@TheUCCHM](#) on Twitter, [Facebook](#) and at our blog site, [Be Water, My Friend](#)

UCCHM Water Advisory #1: Water storage changes in California from GRACE

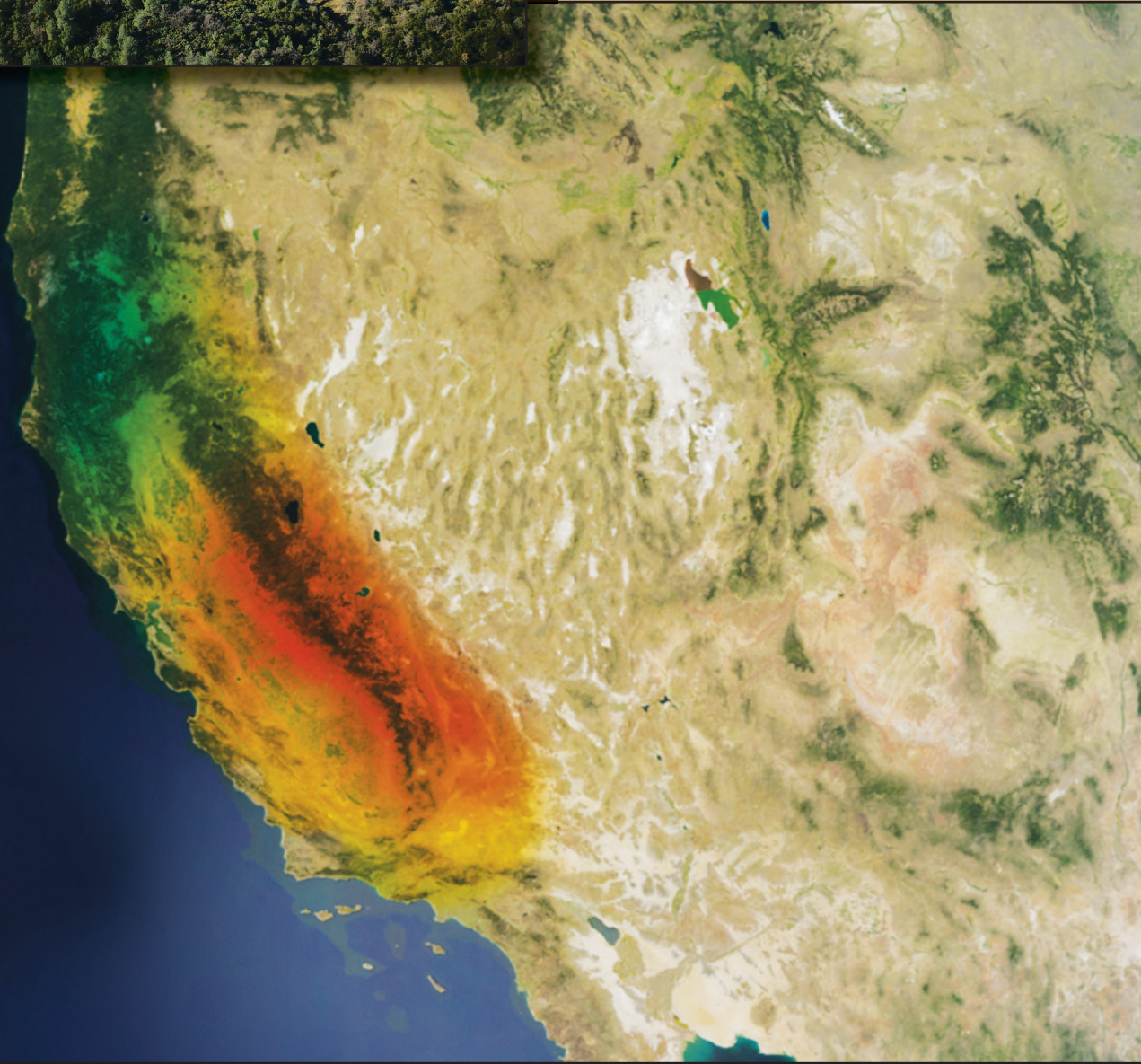


Geophysical Research Letters

16 FEBRUARY 2011

Volume 38 Number 3

 AGU American Geophysical Union

- 
- Groundwater depleting rapidly in California's Central Valley
 - New method to assess coral reef health
 - Sediment records suggest El Niño variability will continue in warmer world

Satellites measure recent rates of groundwater depletion in California's Central Valley

J. S. Famiglietti,^{1,2} M. Lo,^{1,2} S. L. Ho,^{2,3} J. Bethune,⁴ K. J. Anderson,² T. H. Syed,^{2,5} S. C. Swenson,⁶ C. R. de Linage,² and M. Rodell⁷

Received 8 December 2010; revised 29 December 2010; accepted 4 January 2011; published 5 February 2011.

[1] In highly-productive agricultural areas such as California's Central Valley, where groundwater often supplies the bulk of the water required for irrigation, quantifying rates of groundwater depletion remains a challenge owing to a lack of monitoring infrastructure and the absence of water use reporting requirements. Here we use 78 months (October, 2003–March, 2010) of data from the Gravity Recovery and Climate Experiment satellite mission to estimate water storage changes in California's Sacramento and San Joaquin River Basins. We find that the basins are losing water at a rate of $31.0 \pm 2.7 \text{ mm yr}^{-1}$ equivalent water height, equal to a volume of 30.9 km^3 for the study period, or nearly the capacity of Lake Mead, the largest reservoir in the United States. We use additional observations and hydrological model information to determine that the majority of these losses are due to groundwater depletion in the Central Valley. Our results show that the Central Valley lost $20.4 \pm 3.9 \text{ mm yr}^{-1}$ of groundwater during the 78-month period, or 20.3 km^3 in volume. Continued groundwater depletion at this rate may well be unsustainable, with potentially dire consequences for the economic and food security of the United States. **Citation:** Famiglietti, J. S., M. Lo, S. L. Ho, J. Bethune, K. J. Anderson, T. H. Syed, S. C. Swenson, C. R. de Linage, and M. Rodell (2011), Satellites measure recent rates of groundwater depletion in California's Central Valley, *Geophys. Res. Lett.*, 38, L03403, doi:10.1029/2010GL046442.

1. Introduction

[2] Nearly 2 billion people rely on groundwater as a primary source of drinking water and for irrigated agriculture [Alley *et al.*, 2002]. However, in many regions of the world, groundwater resources are under stress due to a number of factors, including salinization, contamination and rapid depletion [Wada *et al.*, 2010]. When coupled with the pressures of changing climate and population growth, the stresses

on groundwater supplies will only increase in the decades to come.

[3] In spite of its importance to freshwater supply, groundwater resources are often poorly monitored, so that a consistent picture of their availability is difficult and sometimes impossible to construct. Moreover, water withdrawals from pumping wells are often unrestricted and unmonitored, further complicating attempts to estimate rates of groundwater consumption. In short, no comprehensive framework for monitoring the world's groundwater resources currently exists.

[4] Satellite observations of time-variable gravity from the Gravity Recovery and Climate Experiment (GRACE) mission [Tapley *et al.*, 2004] may ultimately provide an important component of such a monitoring framework. Recent studies have clearly demonstrated that GRACE-derived estimates of variations of total water storage, TWS (all of the snow, ice, surface water, soil water and groundwater in region), when combined with auxiliary hydrological datasets, can provide groundwater storage change estimates of sufficient accuracy to benefit water management [Yeh *et al.*, 2006; Zaitchik *et al.*, 2008]. Most recently, the GRACE-based approach has been applied to estimate rates of groundwater depletion in northern India, a vast agricultural region that relies heavily on unmonitored groundwater withdrawals for its irrigation water supply [Rodell *et al.*, 2009; Tiwari *et al.*, 2009].

[5] In this study we use 78 months of GRACE data, from October, 2003 through March, 2010, to examine water storage changes in California's Sacramento and San Joaquin River Basins ($\sim 154,000 \text{ km}^2$) (Figure 1), which encompass the Central Valley ($\sim 52,000 \text{ km}^2$) and its underlying groundwater aquifer system. The Sacramento Basin and San Joaquin Basin, which includes the internally-draining Tulare Basin, are home to California's major mountain water source, the snowpack of the Sierra Nevada range. The Central Valley is the most productive agricultural region in the U. S., growing more than 250 different crops, or 8 percent of the food produced in the U. S. by value [Faunt, 2009]. It accounts for 1/6 of the country's irrigated land and supplies 1/5 of the demand for groundwater in the United States. As the second most pumped aquifer in the U. S. after the High Plains aquifer, the Central Valley offers a compelling example of the importance of groundwater as a resource, as well as the need to manage its use for sustained availability and productivity.

2. Data and Methods

[6] We use 78 months of GRACE gravity coefficients from Release-04 computed at the Center for Space Research at the University of Texas at Austin. The temporal mean was removed to compute gravity anomalies, and each field was

¹UC Center for Hydrologic Modeling, University of California, Irvine, California, USA.

²Department of Earth System Science, University of California, Irvine, California, USA.

³Marine Environmental Biology, Department of Biological Sciences, University of Southern California, Los Angeles, California, USA.

⁴Department of Geology, Carleton College, Northfield, Minnesota, USA.

⁵Department of Applied Geology, Indian School of Mines, Dhanbad, India.

⁶Climate and Global Dynamics Division, National Center for Atmospheric Research, Boulder, Colorado, USA.

⁷Hydrological Sciences Branch, NASA Goddard Space Flight Center, Greenbelt, Maryland, USA.

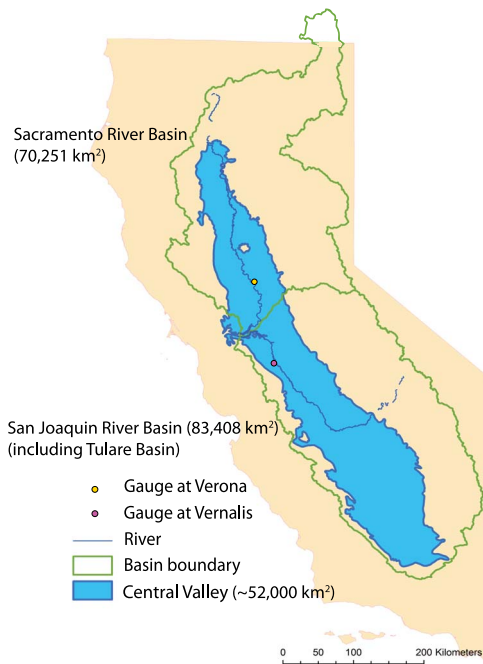


Figure 1. The Sacramento and San Joaquin river basins, including the Tulare basin and the Central Valley in California.

filtered to reduce noise [Swenson and Wahr, 2006] and then converted to mass in units of equivalent water height. We then used the method of averaging kernels [Swenson and Wahr, 2002] convolved with the GRACE coefficients to estimate the average water storage change for the combined Sacramento and San Joaquin River Basins. In order to restore power of the signal reduced by the truncation of the gravity coefficients (at degree and order 60) and filtering, the original estimate of GRACE TWS was scaled by a factor of 2.35 in order to recover an unbiased mass change estimate for the region [Velicogna and Wahr, 2006].

[7] Precipitation (P) data from the PRISM system [Daly *et al.*, 2008], satellite-based evapotranspiration (E) [Tang *et al.*, 2009] and U. S. Geological Survey (USGS) streamflow (Q) measurements at the Verona and Vernalis gauging stations (see Figure 1) were used in a water balance to assess the accuracy of the GRACE data (see Results).

[8] Snow, surface water and soil moisture data were required to isolate the groundwater contribution to TWS changes. Snow water equivalent (SWE) data were obtained from the National Operational Hydrologic Remote Sensing Center, and were determined from a combination of remote, field survey and *in situ* observations assimilated into an operational snow simulation model [http://www.nohrsc.noaa.gov/technology/]. Surface water storage data were compiled for the 20 largest reservoirs in the river basins, which accounted for the bulk of the observed surface water changes, and were obtained from the California Department of Water Resources [http://cdec.water.ca.gov/reservoir.html]. Soil moisture content is largely unmeasured in the United States. Consequently, we estimated soil moisture storage using the average of three different soil moisture simulations [Rodell *et al.*, 2009] for the corresponding time period taken from land surface models [Ek *et al.*, 2003; Koster and Suarez, 1992; Liang *et al.*, 1994] included in the NASA Global Land Data Assimilation System [Rodell *et al.*, 2004a].

[9] GRACE TWS monthly errors are 45.3 mm, which is the sum of the leakage error [Swenson and Wahr, 2002] and the residual error in the filtered, scaled GRACE data. Since no published error estimates for the monthly surface water and SWE were available, we assumed an error of 15 percent of the mean absolute changes in each, i.e., 4.0 mm for surface water and 7.0 mm for snow. Soil moisture error was estimated as the mean monthly standard deviation of the three model time series, or 11.9 mm. These errors combine to yield a monthly error in our groundwater estimate of 47.5 mm. Uncertainties in the GRACE TWS, SWE, and surface water trends were estimated using a least squares fit, and then propagating errors from the monthly data using the covariance matrix. We find trend errors of 2.7 mm yr⁻¹, 0.4 mm yr⁻¹, and 0.2 mm yr⁻¹ for GRACE TWS, SWE, and surface water respectively. Error in the soil moisture trend was computed as the standard deviation of trends from the three models, which is 2.8 mm yr⁻¹. The total error estimate for the groundwater trend, 3.9 mm yr⁻¹, combines these values and assumes that the individual errors are uncorrelated.

3. Results

[10] To assess the accuracy of our GRACE-derived water storage estimate for the combined river basins, we compared its time derivative, dS/dt , to that determined from an independent water balance for the region ($dS/dt = P - E - Q$). Figure 2a shows the monthly-averaged P , E , and Q data. Figure 2b shows that the observed water balance agrees well with the storage changes observed from GRACE, giving confidence that the GRACE data accurately capture the storage changes in the basins and can be used to estimate groundwater storage trends. The blue shading in Figure 2b represents the error in the GRACE dS/dt of 63 mm month⁻¹. The red shading represents the uncertainty in our water balance estimate of dS/dt , calculated after Rodell *et al.*

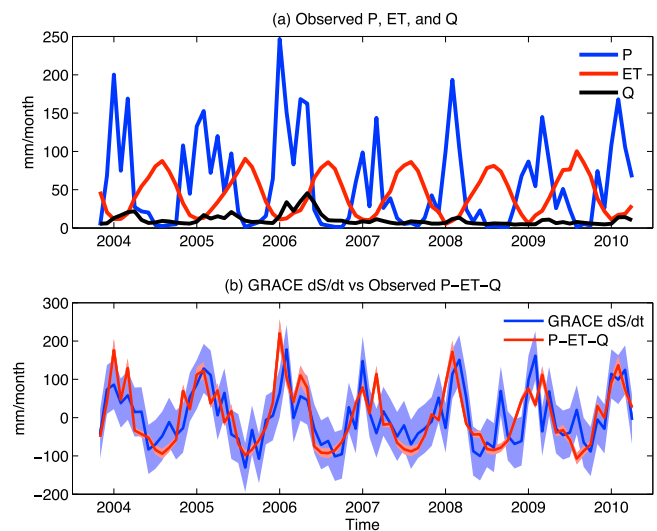


Figure 2. (a) Precipitation (P), evapotranspiration (E), and streamflow (Q) (mm/month) from October 2003–March 2010. (b) Comparison between observed total water storage change (dS/dt) and that from GRACE. Blue shading shows GRACE dS/dt errors. Red shading shows uncertainty in the observed water balance estimate of dS/dt .

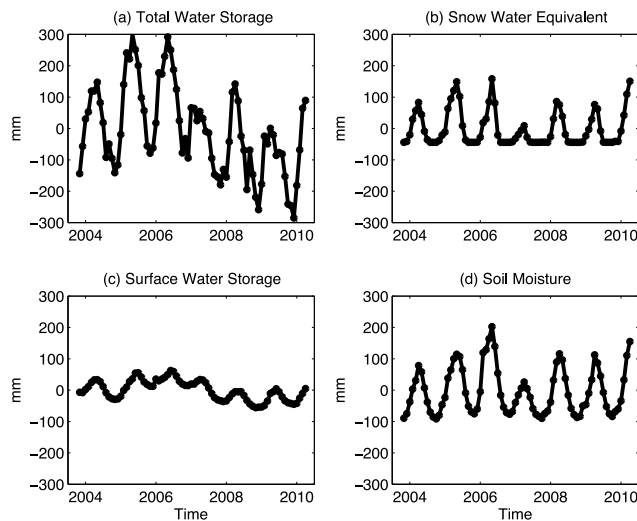


Figure 3. Monthly anomalies of (a) total water storage; (b) snow water equivalent; (c) surface water storage; and (d) soil moisture for the Sacramento and San Joaquin River Basins in mm from October 2003 to March 2010.

[2004a, 2004b] assuming relative errors of 15 percent in P [Jeton *et al.*, 2005] and E [Tang *et al.*, 2009], and 5 percent in Q [Rodell *et al.*, 2004b].

[11] Figure 3a shows the GRACE-based estimate of TWS variations for the combined Sacramento-San Joaquin Basins. The regional drought conditions, which persisted from 2006 through the end of the study, are evident. During the 78-month period beginning in October, 2003, total water storage declined at a rate of $31.0 \pm 2.7 \text{ mm yr}^{-1}$ equivalent water height, which corresponds to a total volume of 30.9 km^3 for the study period.

[12] In order to isolate groundwater storage variations from the GRACE TWS estimate, water mass variations in snow, surface water and soil moisture were estimated and subtracted from the total. Below-average SWE (Figure 3b) during the winters of 2006/07 through 2008/09 is apparent, consistent with the regional drought conditions, as are above-average conditions before and after that time period. These data show a slight decrease of $1.6 \pm 0.4 \text{ mm yr}^{-1}$ equivalent water height, which corresponds to 1.5 km^3 of water loss in 78 months. Figure 3c shows that surface water storage has been declining slightly since 2006. Over the length of the study period, surface water storage decreased at a rate of $8.8 \pm 0.2 \text{ mm yr}^{-1}$, accounting for 8.7 km^3 of water loss. The loss of soil moisture (Figure 3d) was not significant during the study period. The trends for total water storage, SWE, surface water, soil moisture, and groundwater, along with the corresponding total volume changes for the October, 2003–March, 2010 period, are summarized in Table 1.

[13] Subtracting the snow, surface water and soil moisture components from GRACE TWS for the combined basins yields the groundwater storage variations shown in Figure 4. Over the course of the study period, groundwater storage decreased by $20.4 \pm 3.9 \text{ mm yr}^{-1}$, which corresponds to a volume of 20.3 km^3 of water loss, or two-thirds of the total water storage loss in the river basins. We assume in this work that nearly all of the groundwater loss occurs in the Central Valley, and that the other major geological features in the

Table 1. Trends in Water Storage for the Combined Sacramento-San Joaquin River Basins^a

	Trend (mm yr^{-1})	Volume Lost (km^3)
Total Water Storage	-31.0 ± 2.7	30.9 ± 2.6
Snow Water Equivalent	-1.6 ± 0.4	1.5 ± 0.3
Surface Water Storage	-8.8 ± 0.2	8.7 ± 0.1
Soil Moisture	-0.2 ± 2.8	0.1 ± 2.7
Groundwater Storage	-20.4 ± 3.9	20.3 ± 3.8
Groundwater Storage (2003/10–2006/03)	-1.4 ± 12.7	0.5 ± 4.8
Groundwater Storage (2006/04–2010/03)	-38.9 ± 9.5	23.9 ± 5.8

^aTrends and volumes are for October, 2003–March, 2010 unless otherwise noted.

combined basins, that is, the mountain ranges surrounding the Valley, have limited capacity to store groundwater. Based on separate water budget analyses of the Sacramento and San Joaquin basins (not shown) we estimate that over 80 percent of the 20.3 km^3 of groundwater loss occurred in the San Joaquin river basin, including the Tulare basin, which is consistent with a recent USGS report on groundwater availability in the Central Valley [Faunt, 2009]. The San Joaquin portion of the Valley has always relied on groundwater more heavily than its Sacramento counterpart because its drier climate results in more limited natural surface water availability.

[14] Figure 4 also shows a distinct break in the behavior of groundwater storage variations. Prior to the onset of drought conditions in 2006, there was no significant change in groundwater storage. However, beginning with the drought in 2006, a steep decline in groundwater storage of $38.9 \pm 9.5 \text{ mm yr}^{-1}$ ($6.0 \text{ km}^3 \text{ yr}^{-1}$) occurred between April, 2006 and March, 2010. Our estimate of the current depletion rate is nearly as large as previous model-based estimates of

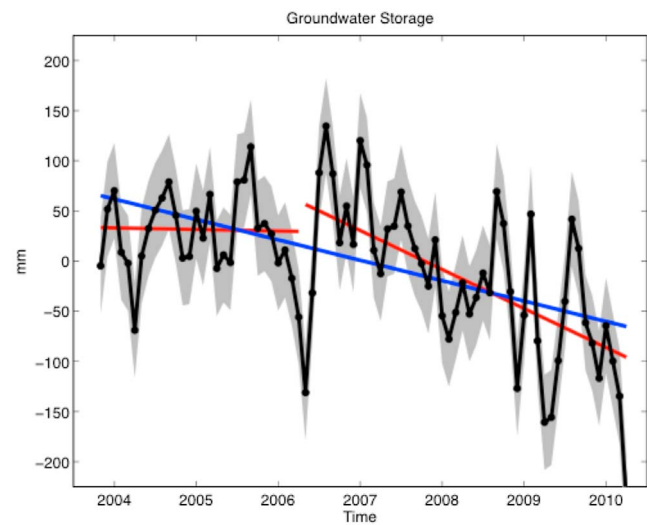


Figure 4. Monthly groundwater storage anomalies for the Sacramento and San Joaquin River Basins in mm, from October 2003 to March 2010. Monthly errors shown by gray shading. The blue line represents the overall trend in groundwater storage changes for the 78-month period. The red lines represent the trends from October 2003 and March 2006 and April 2006 through March 2010.

groundwater losses [Faunt, 2009] during the two major droughts of the last 50 years. Reported groundwater losses during those periods were approximately $12.3 \text{ km}^3 \text{ yr}^{-1}$ from 1974–76, and $8.2 \text{ km}^3 \text{ yr}^{-1}$ from 1985–89. Our estimated rate is also slightly larger than the loss of $4.9 \text{ km}^3 \text{ yr}^{-1}$ reported by Faunt [2009] for the more recent dry period between 1998 and 2003. Combining the USGS estimates of groundwater depletion between 1998 and 2003 with our GRACE-based estimates for October, 2003 through March, 2010 indicates that nearly 48.5 km^3 of groundwater has been lost from the Central Valley in the 12-year time period.

4. Discussion

[15] The picture that emerges from our GRACE based analysis is in agreement with Faunt [2009], and extends aspects of that study from its end date in 2003 to the present. Furthermore, results are consistent with the historical pattern of Central Valley agricultural water use. Facing significant cuts in managed surface water allocations during periods of drought, farmers, in particular those in the drier San Joaquin Valley, are forced to tap heavily into groundwater reserves to attempt to meet their irrigation water demands – this in a region where groundwater dependence is already high. Under these conditions, groundwater use rates exceed replenishment rates, and groundwater storage and the water table drop. Given the naturally low rates of groundwater recharge in the San Joaquin Valley, combined with projections of decreasing snowpack [Cayan et al., 2006] and population growth, continued groundwater depletion at the rates estimated in this study may become the norm in the decades to come, and may well be unsustainable on those time scales.

[16] GRACE-based estimates of groundwater storage changes provide a holistic view of aquifer behavior that may not be otherwise possible, in particular in the developing world. Even in well-instrumented regions, a typical groundwater availability study is a massive undertaking, often several years in the making assembling supporting datasets and implementing numerical groundwater models. While there is no substitute for a dense network of ground-based observations and detailed groundwater model simulations, it is not clear that the major effort required for model-based studies can be sustained as part a routine monitoring program. Satellite gravimetry offers an important complement to both *in situ* observations and modeling studies by enabling independent estimates of groundwater storage changes, and by providing the opportunity to constrain aquifer-scale groundwater model simulations [Zaitchik et al., 2008; Lo et al., 2010].

[17] **Acknowledgments.** This research was funded by grants from NASA's GRACE Science Team, Terrestrial Hydrology and Earth and Space Sciences fellowship program. Claudia Faunt of the U. S. Geological Survey provided critical datasets used in this work. We thank Q. Tang at the University of Washington for providing evapotranspiration data.

References

- Alley, W. M., R. W. Healy, J. W. LaBaugh, and T. E. Reilly (2002), Flow and storage in groundwater systems, *Science*, *296*, 1985–1990, doi:10.1126/science.1067123.
- Cayan, D., E. P. Maurer, M. D. Dettinger, M. Tyree, and K. Hayhoe (2006), Climate scenarios for California, *Rep. CEC-500-2005-203-SF*, 52 pp., Calif. Clim. Change Cent., Sacramento.
- Daly, C., M. Halblieb, J. I. Smith, W. P. Gibson, M. K. Doggett, G. H. Taylor, J. Curtis, and P. P. Pasteris (2008), Physiographically sensitive mapping of climatological temperature and precipitation across the conterminous United States, *Int. J. Climatol.*, *28*, 2031–2064, doi:10.1002/joc.1688.
- Ek, M. B., K. E. Mitchell, Y. Lin, E. Rogers, P. Grunmann, V. Koren, G. Gayno, and J. D. Tarpley (2003), Implementation of Noah land surface model advances in the National Centers for Environmental Prediction operational mesoscale Eta model, *J. Geophys. Res.*, *108*(D22), 8851, doi:10.1029/2002JD003296.
- Faunt, C. C. (Ed.) (2009), Groundwater availability of the Central Valley Aquifer, California, *U.S. Geol. Surv. Prof. Pap.*, *1766*, 225 pp.
- Jeton, A. E., S. A. Watkins, J. Thomas, and J. Hunnington (2005), Evaluation of precipitation estimates from PRISM for the 1961–90 and 1971–2000 data sets, Nevada, *U.S. Geol. Surv. Sci. Invest. Rep.*, *2005-5291*.
- Koster, R. D., and M. J. Suarez (1992), Modeling the land surface boundary in climate models as a composite of independent vegetation stands, *J. Geophys. Res.*, *97*, 2697–2715.
- Liang, X., D. P. Lettenmaier, E. F. Wood, and S. J. Burges (1994), A simple hydrologically-based model of land-surface water and energy fluxes for general-circulation models, *J. Geophys. Res.*, *99*, 14,415–14,428, doi:10.1029/94JD00483.
- Lo, M., J. S. Famiglietti, P. J.-F. Yeh, and T. H. Syed (2010), Improving parameter estimation and water table depth simulation in a land surface model using GRACE water storage and estimated base flow data, *Water Resour. Res.*, *46*, W05517, doi:10.1029/2009WR007855.
- Rodell, M., et al. (2004a), The Global Land Data Assimilation System, *Bull. Am. Meteorol. Soc.*, *85*, 381–394, doi:10.1175/BAMS-85-3-381.
- Rodell, M., J. S. Famiglietti, J. Chen, S. I. Seneviratne, P. Viterbo, S. Holl, and C. R. Wilson (2004b), Basin scale estimates of evapotranspiration using GRACE and other observations, *Geophys. Res. Lett.*, *31*, L20504, doi:10.1029/2004GL020873.
- Rodell, M., I. Velicogna, and J. S. Famiglietti (2009), Satellite-based estimates of groundwater depletion in India, *Nature*, *460*, 999–1002, doi:10.1038/nature08238.
- Swenson, S. C., and J. Wahr (2002), Methods for inferring regional surface-mass anomalies from Gravity Recovery and Climate Experiment (GRACE) measurements of time-variable gravity, *J. Geophys. Res.*, *107*(B9), 2193, doi:10.1029/2001JB000576.
- Swenson, S. C., and J. Wahr (2006), Post-processing removal of correlated errors in GRACE data, *Geophys. Res. Lett.*, *33*, L08402, doi:10.1029/2005GL025285.
- Tang, Q., S. Peterson, R. Cuenca, Y. Hagimoto, and D. P. Lettenmaier (2009), Satellite-based near-real-time estimation of irrigated crop water consumption, *J. Geophys. Res.*, *114*, D05114, doi:10.1029/2008JD010854.
- Tapley, B. D., S. Bettadpur, J. C. Ries, P. F. Thompson, and M. M. Watkins (2004), GRACE measurements of mass variability in the Earth system, *Science*, *305*, 503–505, doi:10.1126/science.1099192.
- Tiwari, V. M., J. Wahr, and S. C. Swenson (2009), Dwindling groundwater resources in northern India, from satellite gravity observations, *Geophys. Res. Lett.*, *36*, L18401, doi:10.1029/2009GL039401.
- Velicogna, I., and J. Wahr (2006), Measurements of time-variable gravity show ice loss in Antarctica, *Science*, *311*, 1754–1756, doi:10.1126/science.1123785.
- Wada, Y., L. P. H. van Beek, C. M. van Kempen, J. W. T. M. Reckman, S. Vasak, and M. F. P. Bierkens (2010), Global depletion of groundwater resources, *Geophys. Res. Lett.*, *37*, L20402, doi:10.1029/2010GL044571.
- Yeh, P. J.-F., S. C. Swenson, J. S. Famiglietti, and M. Rodell (2006), Remote sensing of groundwater storage changes in Illinois using the Gravity Recovery and Climate Experiment (GRACE), *Water Resour. Res.*, *42*, W12203, doi:10.1029/2006WR005374.
- Zaitchik, B. F., M. Rodell, and R. H. Reichle (2008), Assimilation of GRACE terrestrial water storage data into a land surface model: Results for the Mississippi River Basin, *J. Hydrometeorol.*, *9*, 535–548, doi:10.1175/2007JHM951.1.
- K. J. Anderson, C. R. de Linage, and T. H. Syed, Department of Earth System Science, University of California, Irvine, CA 92697, USA.
- J. Bethune, Department of Geology, Carleton College, Mudd Hall, Northfield, MN 55057, USA.
- J. S. Famiglietti and M. Lo, UC Center for Hydrologic Modeling, University of California, Irvine, CA 92697, USA. (jfamigli@uci.edu)
- S. L. Ho, Marine Environmental Biology, Department of Biological Sciences, University of Southern California, Los Angeles, CA 90089, USA.
- M. Rodell, Hydrological Sciences Branch, NASA Goddard Space Flight Center, Code 614.3, Greenbelt, MD 20771, USA.
- S. C. Swenson, Climate and Global Dynamics Division, National Center for Atmospheric Research, PO Box 3000, Boulder, CO 80307, USA.